

$(\alpha_0 = (\text{Sub} \rightarrow \text{Koo})) = f(\text{Rep})$



Rue Saint-Éleuthère, Paris

$(\alpha_0 = (\text{Sub} \rightarrow \text{Koo})) = f(\text{Ad})$



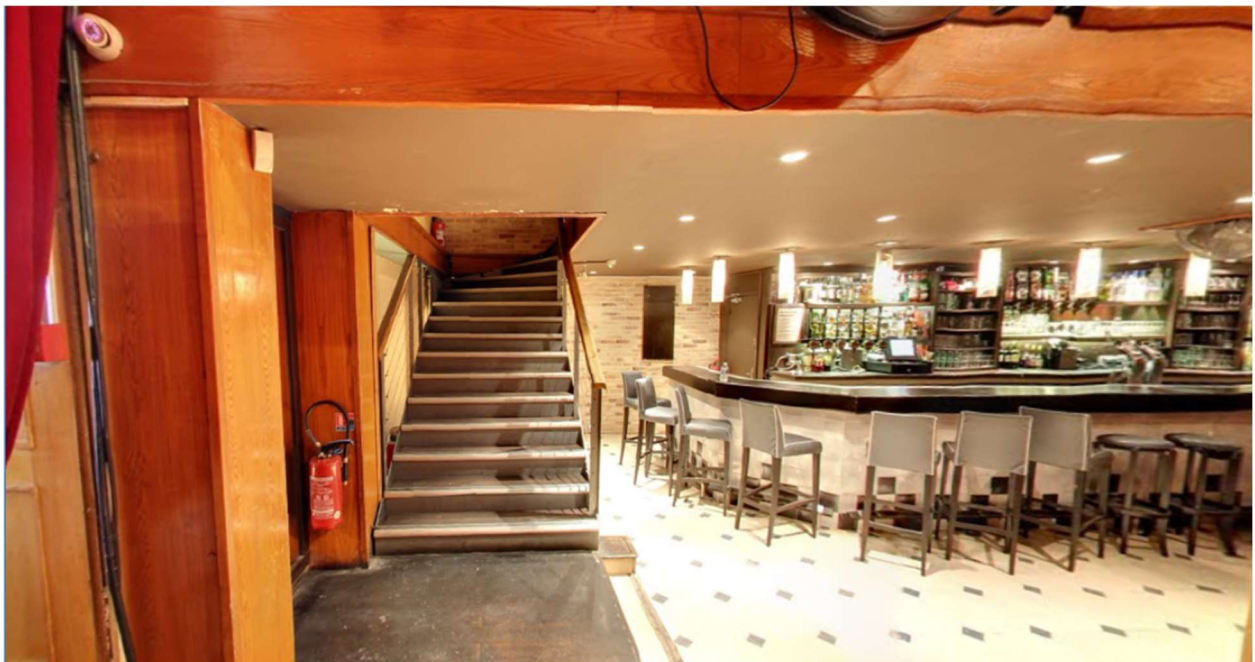
Rue de Fontarabie, Paris

$(\alpha_0 = (\text{Sub} \rightarrow \text{Koo})) = f(\text{Adj})$



Rue de Bercy, Paris

$(\alpha_0 = (\text{Sub} \rightarrow \text{Koo})) = f(\text{Ex})$



Rest. Bizz' Art, Paris

$(\beta_0 = (K_{oo} \rightarrow \text{Sup})) = f(S)$



Rue Notre Dame de Victoires, Paris

$(\beta_0 = (K_{oo} \rightarrow \text{Sup})) = f(U)$



Passage Piat, Paris

$(\beta_0 = (Koo \rightarrow Sup)) = f(E)$



Avenue Junot, Paris

$(\beta_0 = (Koo \rightarrow Sup)) = f(Sys)$



Rue Vigée-Lebrun, Paris

$(\beta_0 = (Koo \rightarrow Sup)) = f(Abb)$



Rue d'Austerlitz, Paris

$(\beta_0 = (Koo \rightarrow Sup)) = f(Rep)$



Quai de Valmy, Paris

$(\beta_0 = (Koo \rightarrow Sup)) = f(Ad)$



Rue Brey, Paris

$(\beta_0 = (Koo \rightarrow Sup)) = f(Adj)$



Rue de la Beaume, Paris

$(\beta_0 = (\text{Koo} \rightarrow \text{Sup})) = f(\text{Ex})$



Rest. Bizz' Art, Paris

$(\beta_{\alpha_0} = (\text{Sub} \rightarrow \text{Sup})) = f(\text{S})$



Rue Saint Éleuthère, Paris

$(\beta\alpha_O = (\text{Sub} \rightarrow \text{Sup})) = f(U)$



Passage Trubert-Bellier, Paris

$(\beta\alpha_O = (\text{Sub} \rightarrow \text{Sup})) = f(E)$



Rue Lepic, Paris

$(\beta_{\alpha_0} = (\text{Sub} \rightarrow \text{Sup})) = f(\text{Sys})$



Rue Legendre, Paris

$(\beta_{\alpha_0} = (\text{Sub} \rightarrow \text{Sup})) = f(\text{Abb})$



Rue de Chartres, Paris

$(\beta_{\alpha_0} = (\text{Sub} \rightarrow \text{Sup})) = f(\text{Rep})$



Square Marcel Bleustein-Blanchet, Paris

$(\beta_{\alpha_0} = (\text{Sub} \rightarrow \text{Sup})) = f(\text{Ad})$



Rue Jacques Coeur, Paris

$(\beta\alpha_0 = (\text{Sub} \rightarrow \text{Sup})) = f(\text{Adj})$



Rue Boyer, Paris

$(\beta\alpha_0 = (\text{Sub} \rightarrow \text{Sup})) = f(\text{Ex})$



Rest. Le Triomphe, Paris

$(\alpha^{\circ}_o = (Koo \rightarrow Sub)) = f(S)$



Impasse Chartière, Paris

$(\alpha^{\circ}_o = (Koo \rightarrow Sub)) = fU$



Place Lachambeaudie, Paris

$(\alpha^{\circ}_o = (\text{Koo} \rightarrow \text{Sub})) = f(\text{E})$



Passage Trubert-Bellier, Paris

$(\alpha^{\circ}_o = (\text{Koo} \rightarrow \text{Sub})) = f(\text{Sys})$



Rue du Cardinal Dubois, Paris

$(\alpha^{\circ}_o = (\text{Koo} \rightarrow \text{Sub})) = f(\text{Abb})$



Avenue de Saint-Mandé, Paris

$(\alpha^{\circ}_o = (\text{Koo} \rightarrow \text{Sub})) = f(\text{Rep})$



Parc André Citroën, Paris

$(\alpha^{\circ}o = (Koo \rightarrow Sub)) = f(Adj)$



Rue Jules César, Paris

$(\alpha^{\circ}o = (Koo \rightarrow Sub)) = f(Adj)$



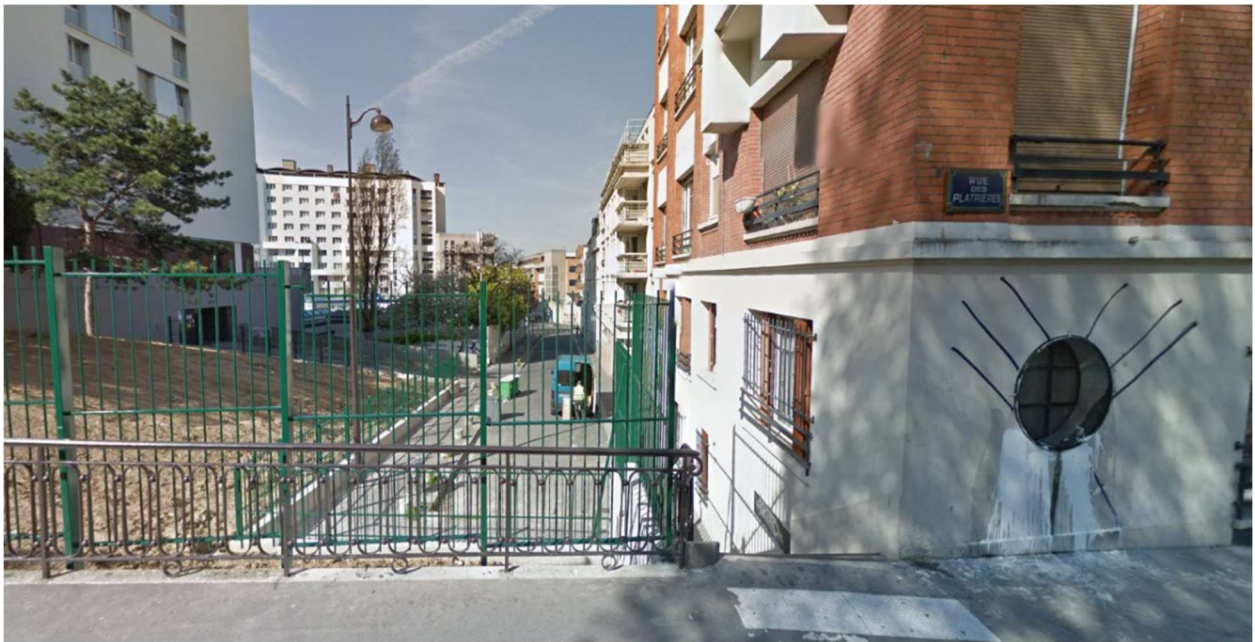
Rest. La Petite Bretagne, 20, rue du Cotentin, 75015 Paris

$(\alpha^{\circ} = (\text{Koo} \rightarrow \text{Sub})) = f(\text{Ex})$



Rue Galande, Paris

$(\beta^{\circ} = (\text{Sup} \rightarrow \text{Koo})) = f(\text{S})$



Rue des Plâtrières, Paris

$(\beta^{\circ}o = (\text{Sup} \rightarrow \text{Koo})) = f(U)$



Rue Duménil, Paris

$(\beta^{\circ}o = (\text{Sup} \rightarrow \text{Koo})) = f(E)$



Rue Saint-Éleuthère, Paris

$(\beta^{\circ} \circ (\text{Sup} \rightarrow \text{Koo})) = f(\text{Sys})$



Rue de Ménilmontant, Paris

$(\beta^{\circ} \circ (\text{Sup} \rightarrow \text{Koo})) = f(\text{Abb})$



Rue des Ursins, Paris

$(\beta^{\circ}o = (\text{Sup} \rightarrow \text{Koo})) = f(\text{Rep})$



Parc Georges Brassens, Paris

$(\beta^{\circ}o = (\text{Sup} \rightarrow \text{Koo})) = f(\text{Ad})$



Rue Cacheux, Paris

$(\beta^{\circ}o = (\text{Sup} \rightarrow \text{Koo})) = f(\text{Adj})$



Rue de Marignan, Paris

$(\beta^{\circ}o = (\text{Sup} \rightarrow \text{Koo})) = f(\text{Ex})$



Rest. Bizz' Art, Paris

$(\alpha^\circ\beta^\circ\circ = (\text{Sup} \rightarrow \text{Sub})) = f(S)$



Avenue du Président Wilson, Paris

$(\alpha^\circ\beta^\circ\circ = (\text{Sup} \rightarrow \text{Sub})) = f(U)$



Parc de Belleville, Paris

$(\alpha^\circ\beta^\circ_o = (\text{Sup} \rightarrow \text{Sub})) = f(E)$



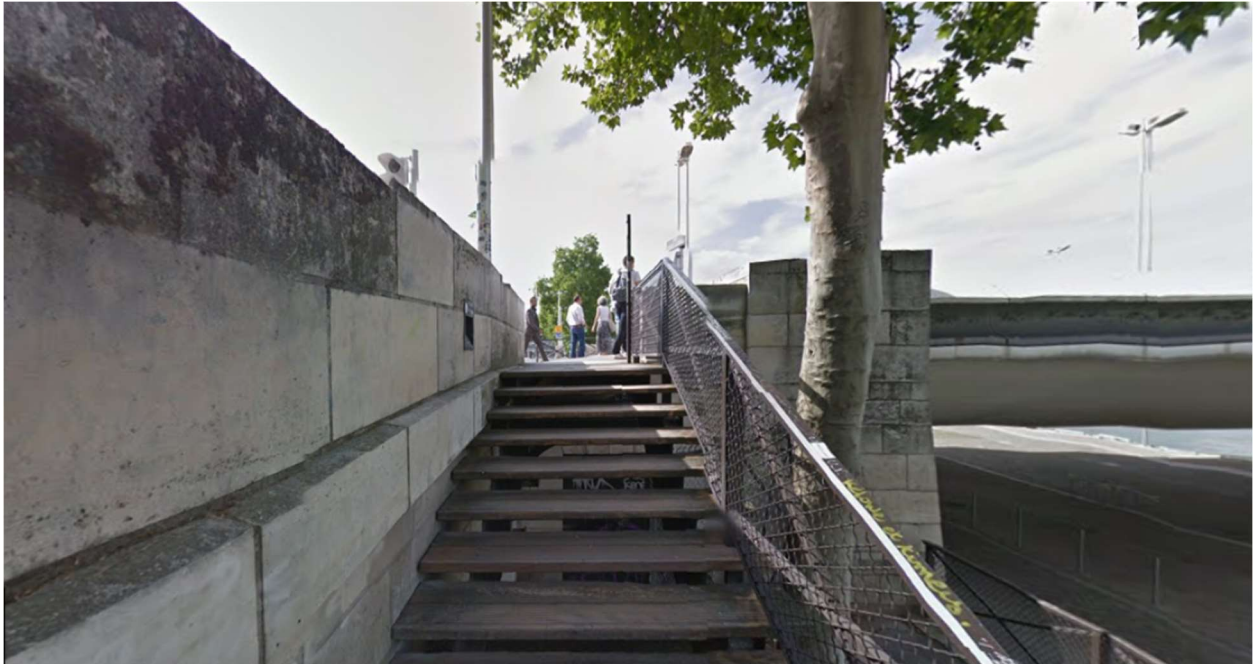
Quai de Valmy, Paris

$(\alpha^\circ\beta^\circ_o = (\text{Sup} \rightarrow \text{Sub})) = f(\text{Sys})$



Rue Legendre, Paris

$(\alpha \circ \beta \circ \circ = (\text{Sup} \rightarrow \text{Sub})) = f(\text{Abb})$



Quai d'Austerlitz, Paris

$(\alpha \circ \beta \circ \circ = (\text{Sup} \rightarrow \text{Sub})) = f(\text{Rep})$



Rue du Moulin des Prés, Paris

$(\alpha^\circ\beta^\circ\circ = (\text{Sup} \rightarrow \text{Sub})) = f(\text{Ad})$



Allée Vivaldi, Paris

$(\alpha^\circ\beta^\circ\circ = (\text{Sup} \rightarrow \text{Sub})) = f(\text{Adj})$



Rue de Saviès, Paris

$(\alpha^\circ \beta^\circ \circ = (\text{Sup} \rightarrow \text{Sub})) = f(\text{Ex})$



Rest. Chez Papa, Rue du Pré Saint-Gervais, Paris

$(\text{id}_{\text{OSub}} = (\text{Sub} \rightarrow \text{Sub})) = f(\text{S})$



Rue Baudricourt, Paris

$$(\text{id}_{\text{OKoo}} = (\text{Koo} \rightarrow \text{Koo})) = f(\text{U})$$



Rue Desaix, Paris

$$(\text{id}_{\text{OSup}} = (\text{Sup} \rightarrow \text{Sup})) = f(\text{E})$$



Passage Trubert-Bellier, Paris

$(\text{id}_{\text{Sub}} = (\text{Sub} \rightarrow \text{Sub})) = f(\text{Sys})$



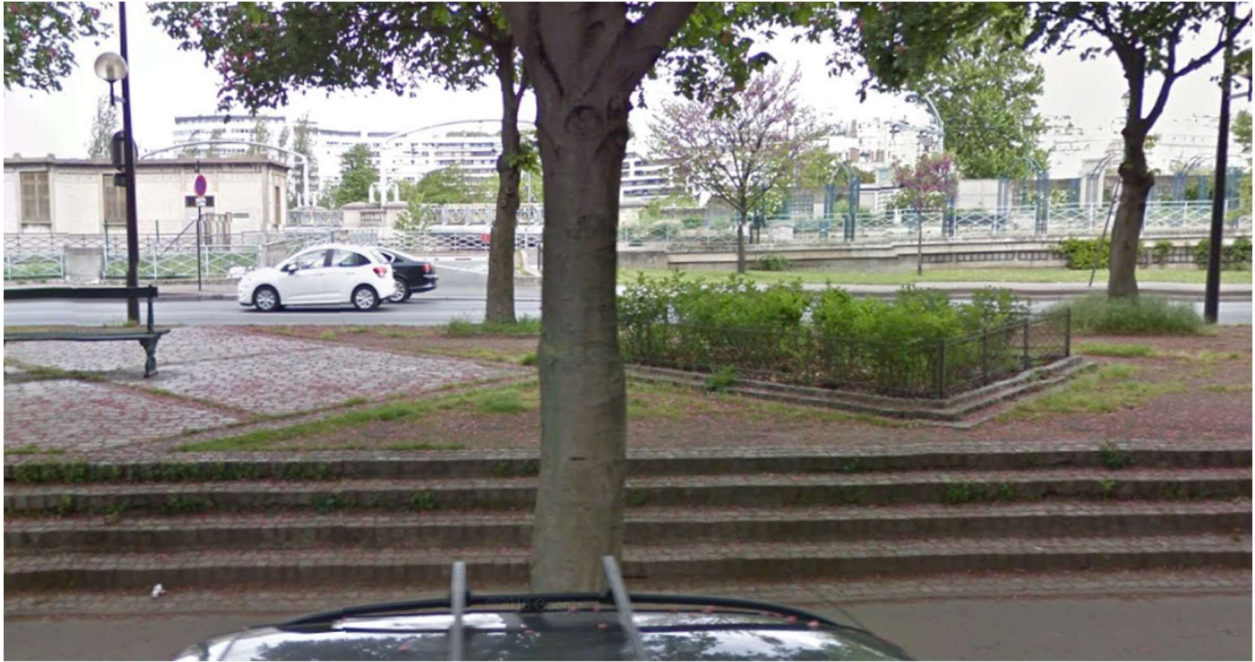
Rue Édouard Quenu, Paris

$(\text{id}_{\text{Koo}} = (\text{Koo} \rightarrow \text{Koo})) = f(\text{Abb})$



Avenue des Ternes, Paris

$(\text{id}_{\text{OSup}} = (\text{Sup} \rightarrow \text{Sup})) = f(\text{Rep})$



Quai de Grenelle, Paris

$(\text{id}_{\text{OSub}} = (\text{Sub} \rightarrow \text{Sub})) = f(\text{Ad})$



Rue de Fontarabie, Paris

$(\text{id}_{\text{OKoo}} = (\text{Koo} \rightarrow \text{Koo})) = f(\text{Adj})$



Rue Royer-Collard, Paris

$(\text{id}_{\text{OSup}} = (\text{Sup} \rightarrow \text{Sup})) = f(\text{Ex})$



Sentier de Montempoivre, Paris